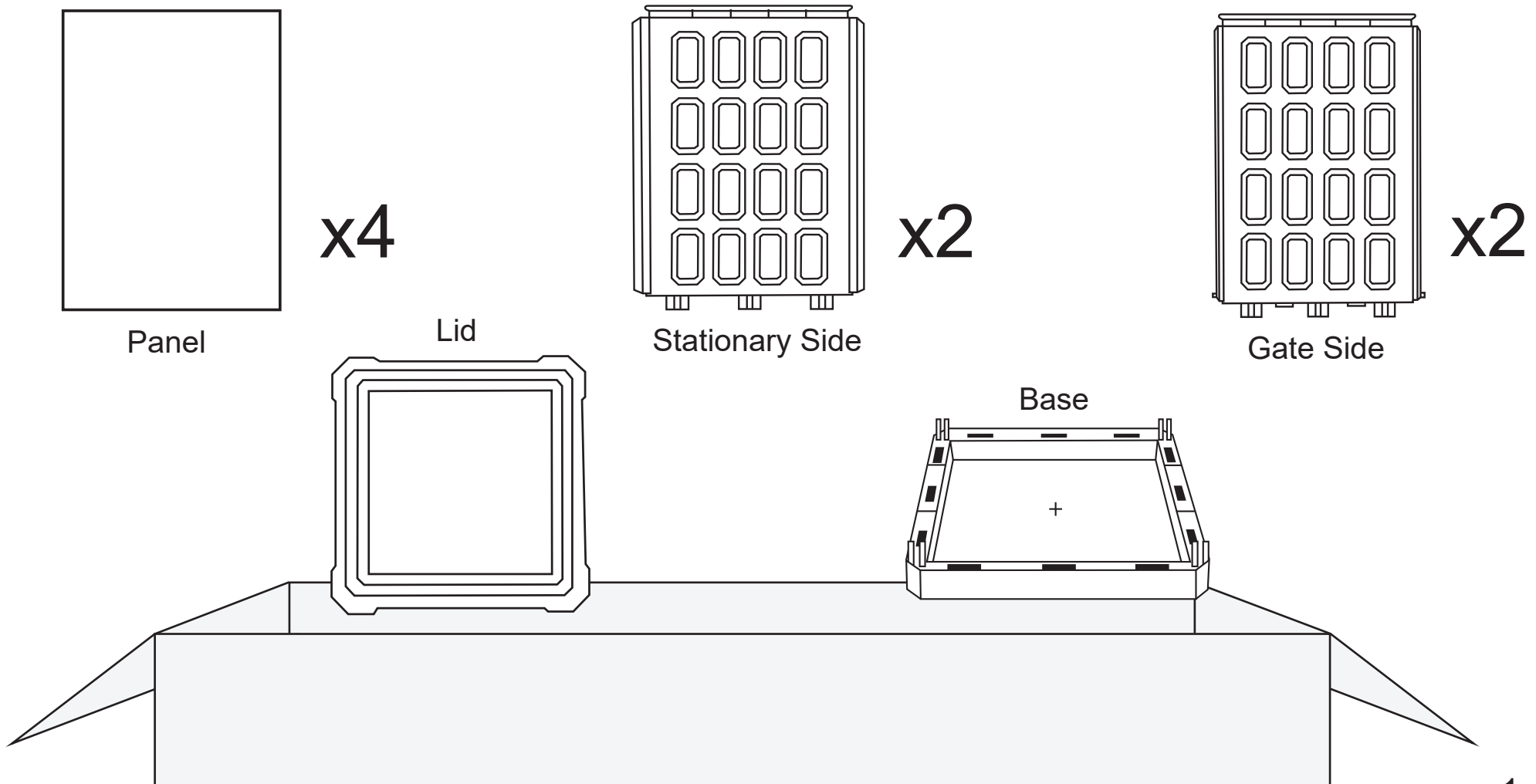


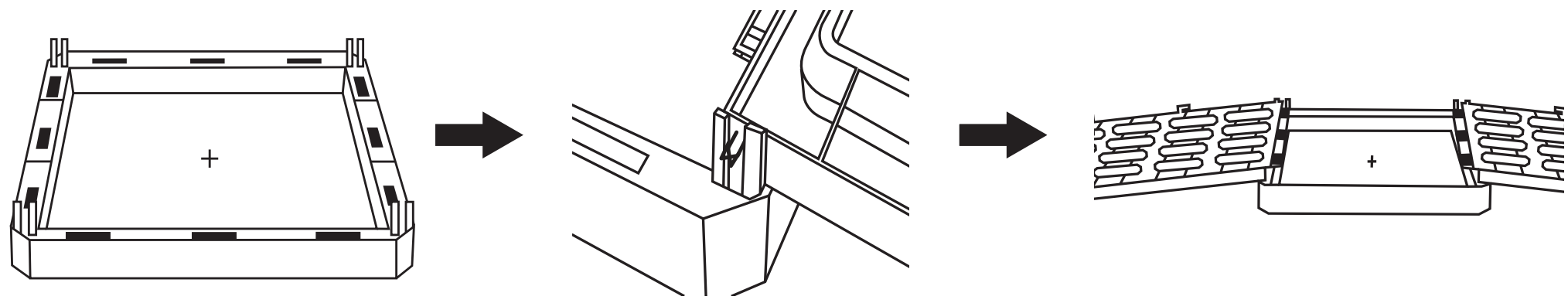
Assembly Instructions EC2626

ErgoCan

Parts Included:

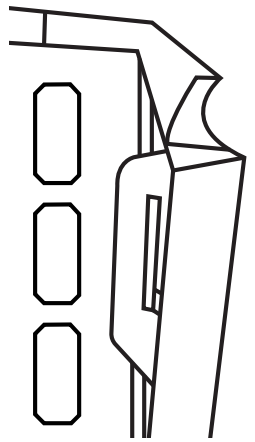


Step 1: Insert Gate Side pins into slots in Base

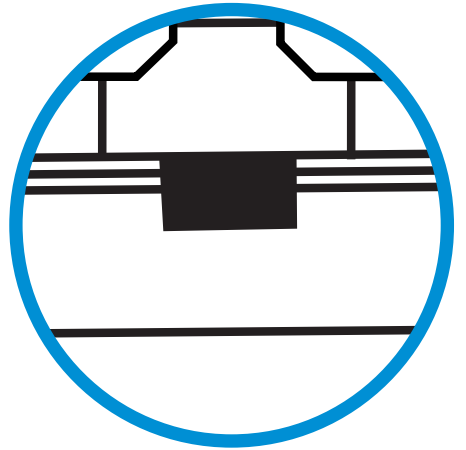
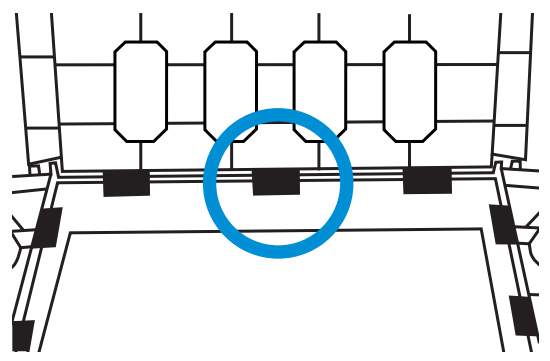


Step 2: Insert Stationary Side pins into Base slots

Apply pressure evenly from the top of the side until panel snaps into the base.

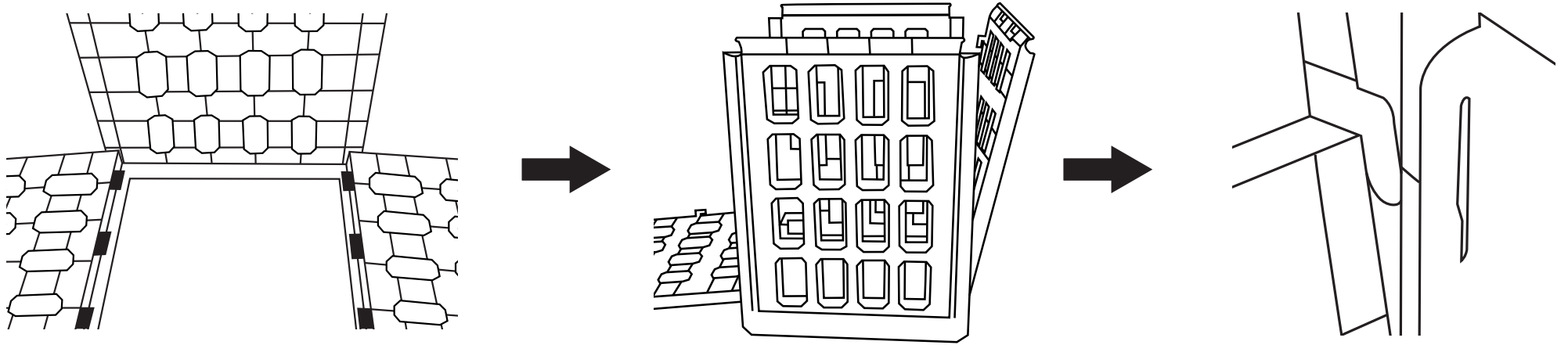


Stationary Side has wide corner and hook flange



Step 3:

Lift Gate Side and insert hook into flange hole. Push down setting Gate Side into Base slots. Insert Panels into side channels.



Step 4: Finished

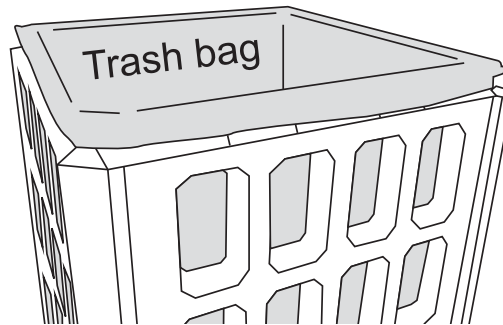
Apply even pressure from the top of panel and make sure the bottom of the panel sits in the bottom channel all the way. Insert bag onto the side tops. Insert Lid and gently push down until it clicks, snapping onto the side tops.



Panel

Needs to sit fully in the bottom channel

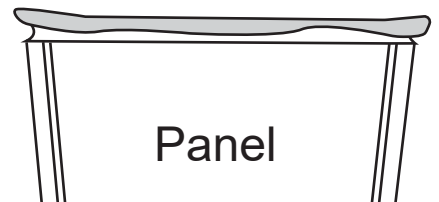
The edge of panel should not be exposed or showing.



Trash bag



No bag should be showing



Panel

Removing the Trash Bag

The Side Gate drops down to the floor. Minimal lifting is required as bags are removed laterally, not vertically. Ergonomically correct posture may reduce risk of Muscular Skeletal Disorders, Neck, Shoulder & Back strains

